



## LUXLINK<sup>®</sup> DALI Switching Sensor – Wall Mount

Part Number – Link/DaliSS/WM/--/--

The new Luxlink DALI wall mounted Switching Sensor is a combined wall mounted switching sensor, On/Off switch and dimmer switch with built-in IR Receiver suitable for use as part of a Luxlink Lighting Management System. This product avoids mounting a sensor in suspended luminaire applications.

This switching sensor incorporates an On/Off switch suitable for dimming any associated load and offers the full Luxlink DALI functionality options to include On, Off, "Go To Scene", "Touch" control for push-to-make switching & dimming and much more. This panel is suitable for use with DALI HF ballasts and load interface units designed to the DALI open standard. This panel is ideally mounted local to the area of control.

### Product Features and Connectivity:

- Suitable for installation into a standard electrical back-box
- Can be supplied with White (/W) or Black (/B) insert finish
- Can be supplied with White (/WH) or metal (/SS or /BR) finish plate
- Built-in infra-red receiver
- Connects directly to the DALI network
- Can be supplied with modular wiring connection



### Installation Notes:

- All Luxlink DALI modular products are suitable for use with DALI open standard protocol ballasts and load interfaces
- All cabling must be rated at 230V

### Application:

The Luxlink DALI wall mounted Switching Sensor is ideal for applications where a wall mounted sensor is preferred or is more convenient, and is typically suited to small meeting rooms or cellular offices or areas where absence detection is required with minimum equipment installation.

All Luxlink DALI field control devices are available with cable and modular wiring plug system assembly for network connection at the nearest Luxonic Luminaire when a Luxlink DALI modular wiring system is being installed.

### Family Products (Network based):

Link/DaliSPOO	Luxlink DALI 2-Button Scene Panel for On/Off Control
Link/DaliSP4O	Luxlink DALI 5-Button Scene Panel for 4 Scene & Off
Link/DaliSP7O	Luxlink DALI 8-Button Scene Panel for 7 Scene & Off
Link/DaliSPRL	Luxlink DALI 2-Button Scene Panel for Raise/Lower
Link/DaliS4RLO	Luxlink DALI 7-Button Scene Panel for 4 Scene, Raise, Lower & Off
Link/DaliSP4	Luxlink DALI 4-Button Scene Panel for 4 Scene

Data subject to change without notice, E & OE, Revision B – 08/06/2016

LUXONIC PRIESTLEY ROAD BASINGSTOKE HAMPSHIRE RG24 9JP  
T: +44 (0)1256 363090 INFO@LUXONIC.CO.UK

WWW.LUXONIC.CO.UK

Luxonic is constantly developing and improving its products. The right is reserved to change specifications without prior notification or public announcement.



## LUXLINK<sup>®</sup> DALI Switching Sensor – Wall Mount

Part Number – Link/DaliSS/WM/--/--

### Technical Data

#### Connection

DALI: Standard Luxlink DALI removable connector with paired terminals  
0.5mm<sup>2</sup> – 1.5mm<sup>2</sup> solid or stranded

#### Power

DALI Supply Input: 13-22.5V from DALI Power Supply Unit

DALI Consumption: 10mA

Isolation: Double Isolation from DALI network

#### Sensors and Status LED

PIR Sensor: Mounted in fascia

IR Receiver: (36kHz for Link/DaliIRC Remote Control)

Status LED: Top left corner of fascia

#### Operating Conditions

Ambient Temp: 0...40°C

Relative Humidity: 90% Max. non-condensing

Storage Temp: -10...+70°C

#### Mechanical Data

Control Module: 35.4mm (W) x 48.4mm (H) x 31.8mm (D)

Module Weight: 35g with DALI Connector

Finish: White or Black flame retardant ABS

#### Conformity

EMC: Emission EN55015  
Immunity EN61547

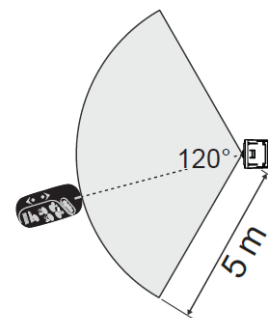
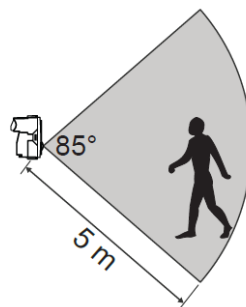
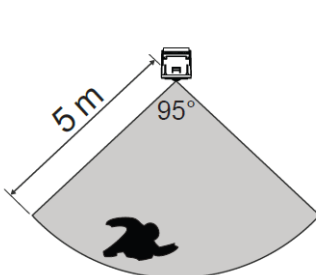
Safety: EN60950

IP Rating: IP30

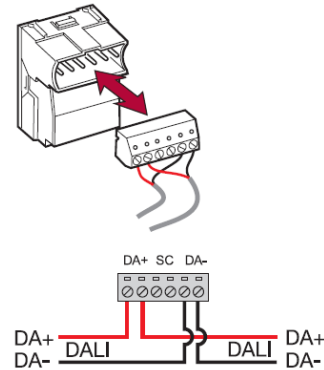
Isolation: 4kV

Environment: Complies with WEEE and RoHS directives

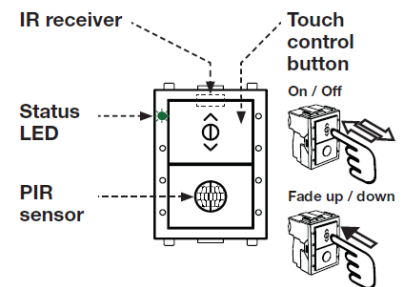
#### Detection Area



### Connections



### Front Panel



### Dimensions

